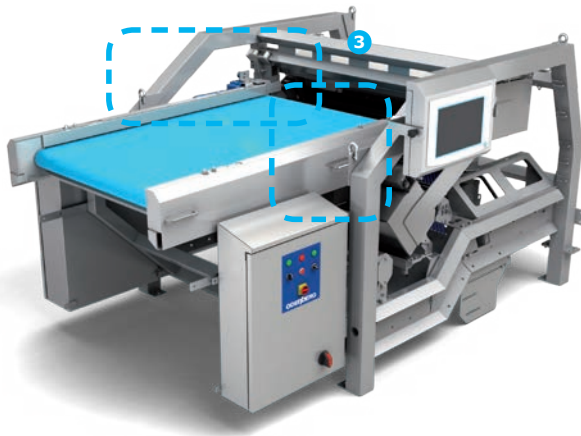


# TITAN II INTERFACE UPGRADE

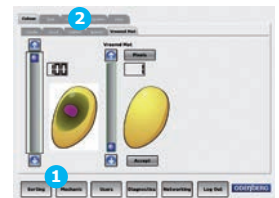
The Titan II upgrade kit is more than simply a new larger 15" touchscreen and easier to use control interface. It boasts new operating software, new electronic and processing hardware and new features to improve the user experience. The processing power of the existing titan is increased by a factor of 25 to future proof your investment for many years to come.



FEATURES	TITAN I	TITAN II
Touchscreen Size	7.5"	15"
Easy of Use	Limited	Easy
Training Requirement	Medium	Low
FEATURES		
Individual Colour Sorting Screens	Colour	Multiple Colour & size
Size Sort	Area / Length / Width	Area / Length / Width
Misshape Shorting	No	Gross (Carrot)
Reverse / Recovery Sorting	Limited	Yes
Live Product Scanning & Sort Diagnostics	No	Yes
Easy Sort Set-up	No	Yes
ANALYSIS & REPORTING		
Product Counts – Accepts & Rejects	Yes	Yes
Reporting of Defect / Rejection Levels	No	Yes
Analysis of Rejection Reasons	No	Yes
Size / Length Distribution	No	Yes
DIAGNOSTICS & MAINTENANCE		
Monitor Camera Health	No	Yes
Finger Tests, Activation Counts, etc	No	Yes
Quick Calibration	Limited	Yes



7.5" Titan I touchscreen



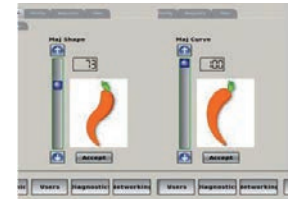
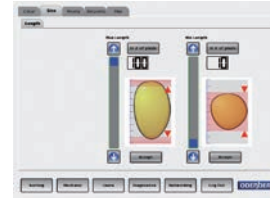
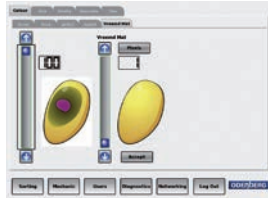
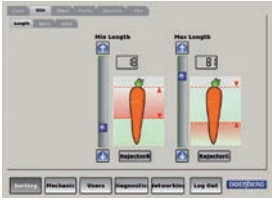
15" Titan II touchscreen

- 1 Graphical screens; increased control
- 2 Tabbed folders
- 3 Software, interface and processing electronics upgrade

## BENEFITS OF TITAN II UPGRADE

- +Improved and easy to use colour control settings
- +On board diagnostics and produce scanning / sort control
- +Product sort data & analysis

## COLOUR, SIZE & SHAPE CONTROL



### INTUITIVE COLOUR CONTROL

- + More Shade / Intensity Settings
- + Defect Size
- + Defect Area
- + Defect Cluster Snubber

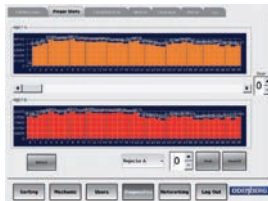
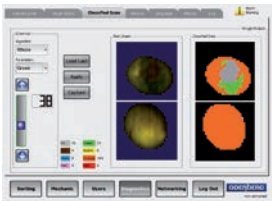
### SIMPLE SIZE CONTROL

- + Length
- + Width
- + Area
- + Aspect

### SHAPE CONTROL

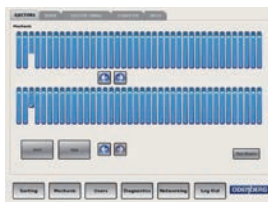
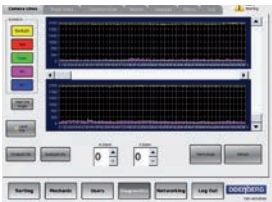
- + Gross Misshape (Carrot)
- For more detailed Shape sort, see the Halo product range.

## DIAGNOSTICS & PRODUCT SCANNING



### LIVE PRODUCT SCANNING

Diagnostics & live scanning of product. Adjust and set sort parameters with full colour defect control.



### DIAGNOSTICS & MAINTENANCE

- + Monitor camera conditions & health
- + Simple calibration
- + Finger activation counts & test

## PRODUCT SORT DATA & ANALYSIS

Data and reporting by:

- + Counts
- + Defect levels
- + Reject reason
- + Size distributions
- + Length distributions



Product ID	Color	Count	Reject
71364	Light Green	1738	0
71365	Light Green	0	3447
66156	Dark Green	17317	0
6895	Light Green	0	2828
70	Red Peel	0	288
17	Dark Black	909	0
17	Light	0	81
206	Orange	0	0
220			
251			

## BENEFITS

- + Increased productivity, better control and flexibility
- + Easier to use and operate
- + Live product scanning, simpler set-ups
- + Live maintenance and operations information
- + Product sort performance information and analysis
- + Reduced training



**TOMRA Sorting Food EMEA**  
 Research Park Haasrode 1622  
 Romeinse straat, 20  
 3001 Leuven  
 BELGIUM  
 Tel: +32 16 396 396  
 Fax: +32 16 396 390  
 food-sorting@tomra.com  
 www.tomra.com/food

**TOMRA Sorting Food AMERICAS**  
 875 Embarcadero Drive  
 West Sacramento  
 California 95605  
 U.S.A.  
 Tel: +1 916-388-3900  
 Fax: +1 916-388-3901  
 food-sorting-us@tomra.com  
 www.tomra.com/food

**TOMRA Sorting Food ASIA**  
 First Floor, Building 9, Binwen road 95  
 Binjiang district, Hangzhou  
 310052, Zhejiang  
 CHINA  
 Tel: +86 571 8893 5895  
 Fax: +86 571 8893 5897  
 food-sorting-asia@tomra.com  
 www.tomra.com/food



Scan QR-Code with reader for more information.