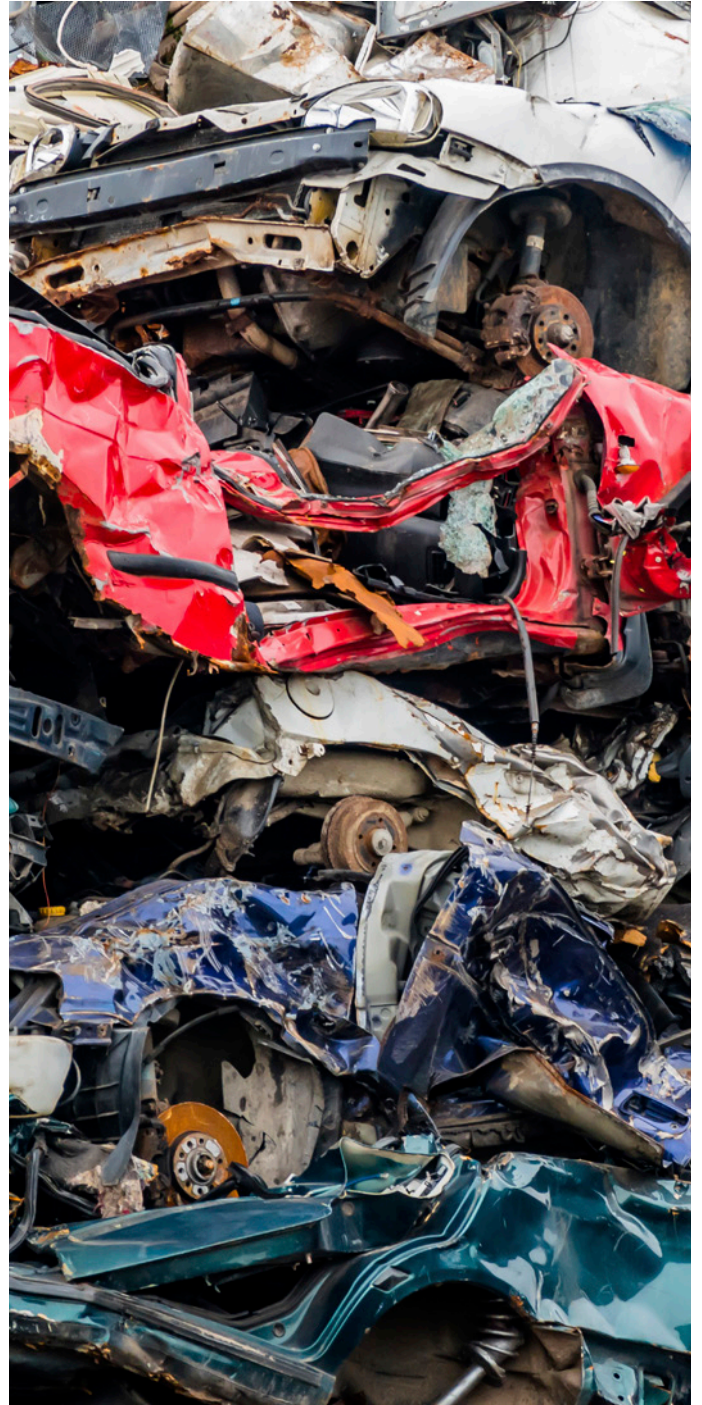


# METALS RECOVERY

ADVANCED SENSOR-BASED  
SORTING TECHNOLOGY FOR  
OPTIMIZED RESULTS



# RECOVER FOR VALUE

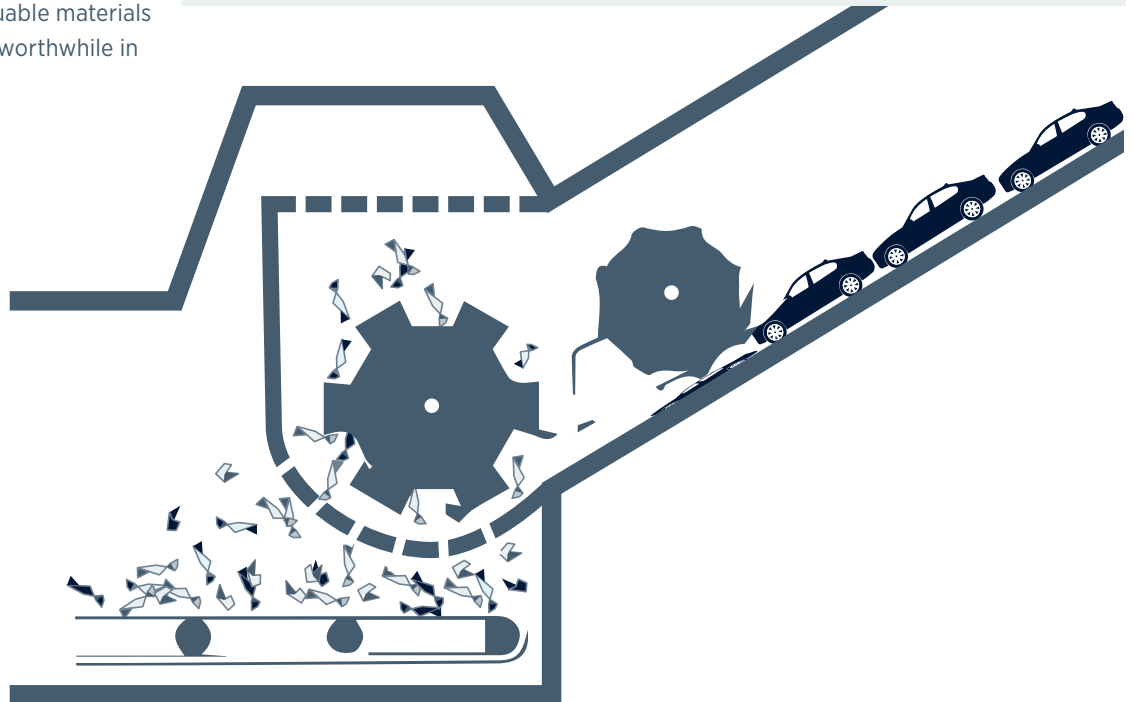
The growing demand for high-quality, secondary raw materials renders targeted recycling increasingly attractive. Whether Copper, Aluminum or Stainless Steel, the processing of sorting valuable used Metals from shredder operations protects the environment and is considerably cheaper than production of Metals from primary resources.

With modern TOMRA's efficient sorting technology, separating valuable materials from Metal waste makes it worthwhile in every aspect.

## A CASE: MORE STRINGENT EU LEGISLATION

Every year, End-of-life vehicles (ELV) generate between 7 and 8 million tons of waste in the European Union which should be managed correctly. Since 2015, the EU wide ELV Directive (2000/53/EC) mandates a recycling ratio of 95% for disused vehicles. Overall, the ELV Directive seems to have been effective in reducing the environmental impacts of this waste flow. The efficiency analysis of the Directive suggests that the various environmental and economic benefits of the ELV Directive outweigh the costs of its implementation.\* This can only be achieved by means of high-value processing lightweight and heavy shredder fractions.

\* Expost evaluation of certain waste stream; Directives, Final report, European Commission, DG Environment, 18 April 2014

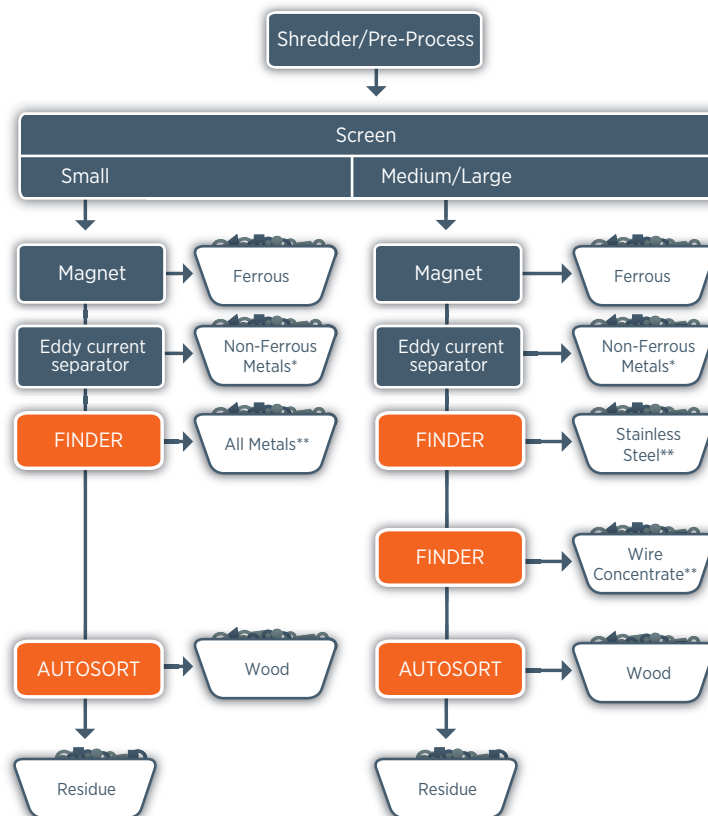


# THE SOLUTION: SEAMLESS AND FLEXIBLE

In pre-process, the input material is shredded and the magnetic fraction (Steel) is removed.

The remaining metals are separated utilizing Eddy Current Separation technology and TOMRA's sensor-based sorters, which separate Stainless Steel (Zurik), residual Metals and a Copper Wire fraction.

**The result:** Stainless Steel (Zurik) and Copper Wire fractions generated from shredder residue and greatly enhanced yield value



\* Option to sort by X-TRACT & COMBISENSE  
\*\* Option to upgrade with AUTOSORT scanner

Simplified Flowchart - Non-ferrous System

THE RESULT:  
CONSTANTLY  
VALUABLE YIELD

# THE TOMRA ADVANTAGE

---

TOMRA PRODUCTS PROVIDE  
THE **HIGHEST – AND MOST  
CONSISTENT – PRODUCT  
YIELD IN THE INDUSTRY**

---

ESTABLISHED, EXTENSIVE  
AND SPECIFIC APPLICATION  
KNOWLEDGE LEADING  
TO **TAILORED SOLUTIONS  
THAT MEET INDIVIDUAL  
CUSTOMER REQUIREMENTS  
AND OPTIMIZED RESULTS**

**SHORT PAYBACK PERIOD**  
OF TOMRA MACHINES  
RESULTING FROM RELIABLY  
HIGH-QUALITY OUTPUT

---

**SUBSTANTIALLY LESS  
DOWNTIME, GREATER  
OUTPUT STABILITY AND  
LOW ENERGY CONSUMPTION**  
THROUGH ROBUST  
MACHINERY AND  
PIONEERING TECHNOLOGY

**FIELD-PROVEN PROCESS  
AND MACHINE DESIGN**  
DEVELOPED WITH  
INDUSTRY PARTNERS

---

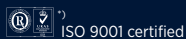
MODULAR DESIGN AND  
**SIMPLE INTEGRATION**

---

**SUPERIOR ALL-AROUND  
SERVICE SUPPORT** WITH  
TOMRA CARE

AS A TECHNOLOGY LEADER, TOMRA SORTING RECYCLING CONTINUES TO BE PIONEER IN SENSOR-BASED SORTING IN THE WASTE AND METAL RECYCLING INDUSTRIES. WITH OVER 4,400 UNITS INSTALLED IN MORE THAN 50 COUNTRIES, OUR EXPERTISE AND SUPERIOR SERVICE ALLOW US TO DELIVER HIGH-PERFORMANCE SORTING AND ANALYTICAL SOLUTIONS TO OUR CUSTOMERS IN A BROAD RANGE OF APPLICATIONS.

Find out why:  
[www.tomra.com/recycling](http://www.tomra.com/recycling)



We print on 100% recycled paper.  
TOMRA Sorting's innovations are helping  
to produce it.

#### Recycling Hub

TOMRA Sorting GmbH\*)  
Otto-Hahn-Strasse 6  
56218 Mülheim-Kärlich  
Germany  
Phone: +49 2630 9652 0  
Fax: +49 2630 9652 101  
[recycling-sorting@tomra.com](mailto:recycling-sorting@tomra.com)

#### UK & Ireland

TOMRA Sorting LTD  
53-55 Queens Road  
Loughborough  
LE11 1HA  
United Kingdom  
Phone: + 44 1509 23 22 39  
Fax: +44 203 481 1323  
[info-uk@tomrasorting.com](mailto:info-uk@tomrasorting.com)

#### United Arab Emirates

TOMRA Sorting JLT  
Unit No. 3702-21, floor No. 37,  
Mayfair Executive Offices JLT,  
Jumeirah Business Center 2,  
Jumeirah Lake Towers  
Dubai  
United Arab Emirates